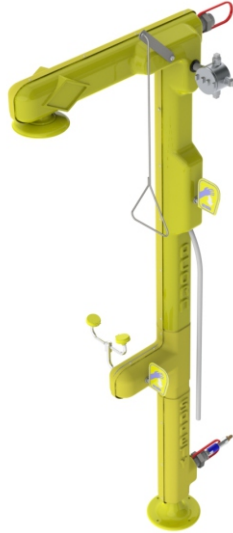




ACORN SAFETY
P.O. BOX 3527
CITY OF INDUSTRY, CA 91744-0527
UNITED STATES OF AMERICA
WWW.ACORNSAFETY.COM

INSTALLATION, OPERATION AND MAINTENANCE INSTRUCTIONS

HEAT TRACED SHOWER



Models: S1360-HT

TECHNICAL ASSISTANCE TOLL FREE TELEPHONE NUMBER

1.800.591.9360

TECHNICAL ASSISTANCE FAX: 1.626.855.4894

NOTES TO THE INSTALLER:

- 1. Please leave this documentation with the owner of the fixture when finished.**
- 2. Please read this entire booklet before beginning the installation.**
- 3. Check your installation for compliance with plumbing, electrical, ANSI Z358.1 and other applicable codes.**

LIMITED WARRANTY

UNITED STATES AND CANADA

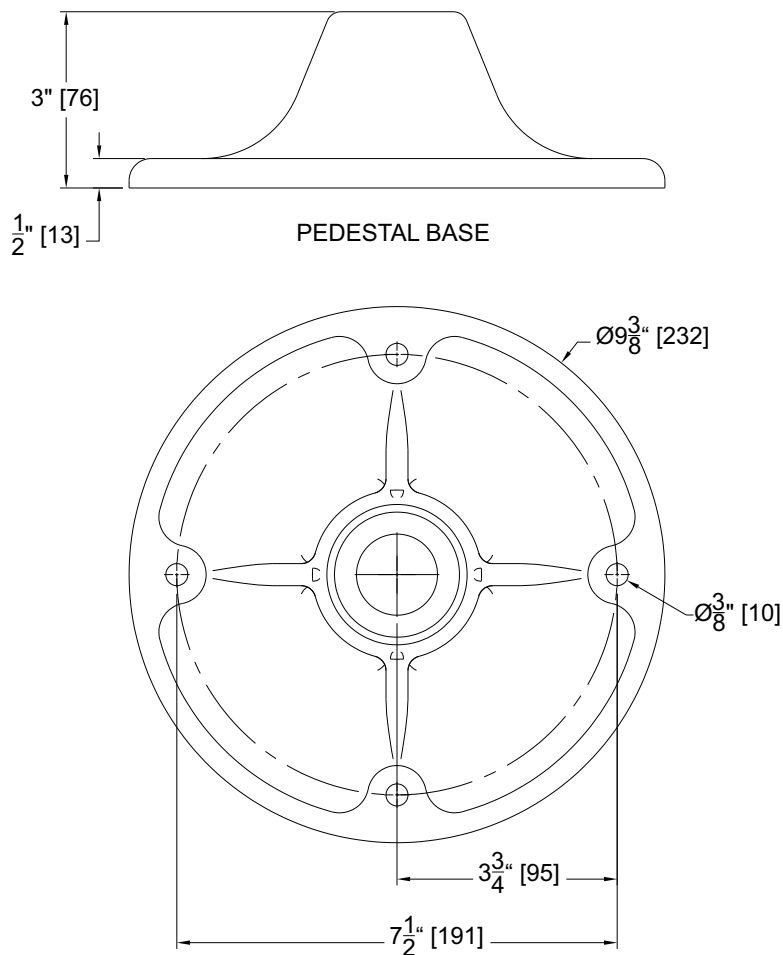
Acorn Safety warrants that its products are free from defects in material or workmanship under normal use and service for a period of one year from date of shipment or 18 months after the date of shipment from factory, whichever comes first. Acorn's™ liability under this warranty shall be discharged solely by replacement or repair of defective material, provided Acorn™ is notified in writing within one year from date of shipment, F.O.B. Industry, California.

This warranty does not cover installation or labor charges and does not apply to materials, which have been damaged by other causes such as mishandling or improper care or abnormal use. The repair or replacement of the defective materials shall constitute the sole remedy of the Buyer and the sole remedy of Acorn™ under this warranty. Acorn™ shall not be liable under any circumstances for incidental, consequential or direct charges caused by defects in materials, or any delay in the repair or replacement thereof. This warranty is in lieu of all other warranties expressed or implied. Product maintenance instructions are issued with each unit and disregard or non-compliance with these instructions will constitute an abnormal use condition and void the warranty. Stainless steel must be protected on job sites during construction and must be properly maintained after the water has been introduced into the safety product or Acorn's™ warranty is void.

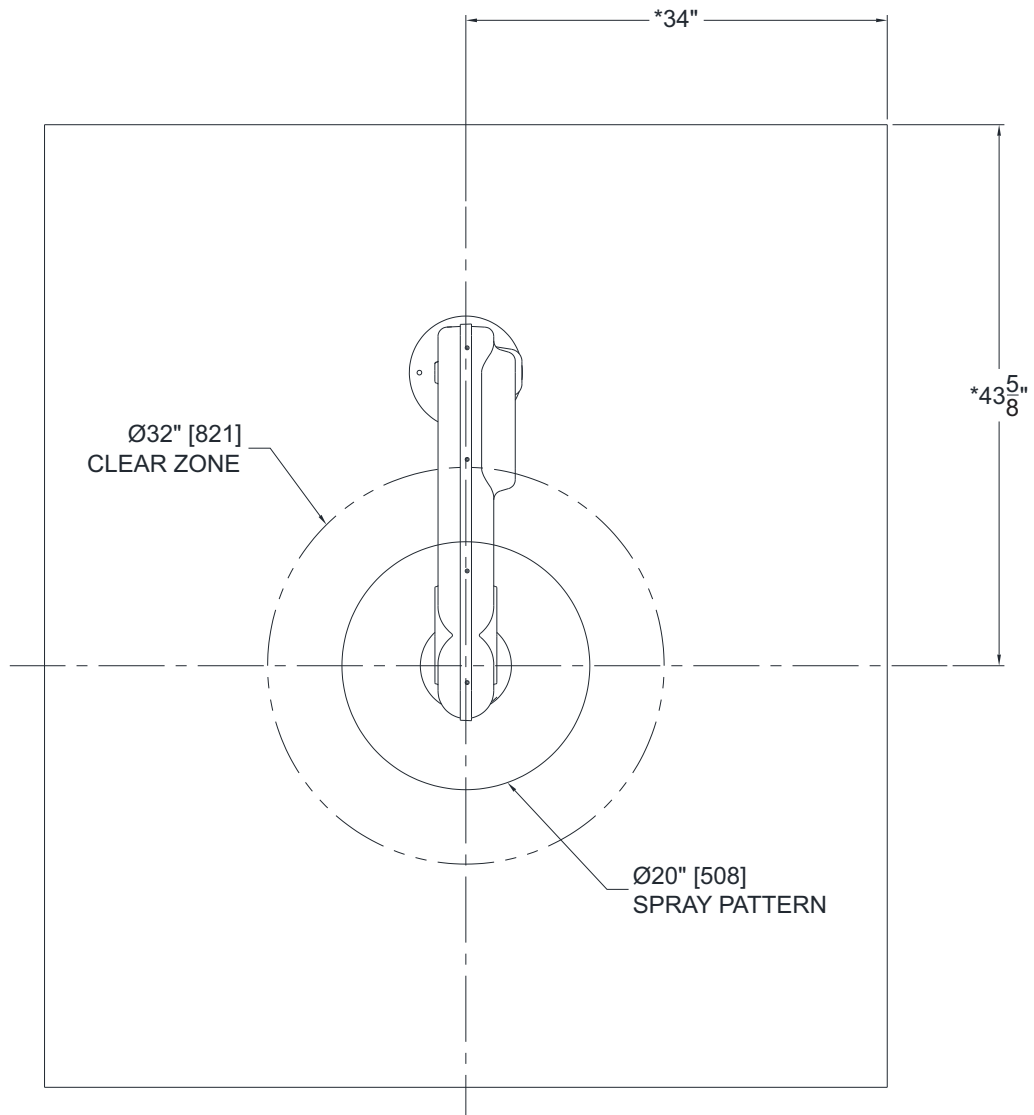
PRELIMINARY STEPS

1. Read the installation instructions prior to beginning the installation.
2. Separate parts from packaging and verify all necessary parts are accounted for and undamaged. Obtain missing or damaged parts from Acorn Safety prior to beginning installation.
3. Flush water supply lines prior to installation. This will remove unwanted debris from the lines and prevent unwanted blockages in the safety equipment.
4. In order to comply with ANSI Z358.1, the safety equipment must be inspected periodically. An inspection tag is provided for documentation purposes.
5. All employees at risk of contamination should be informed and trained in the use of this and any other safety equipment. The signage provided should be posted appropriately in close proximity to this equipment.

ROUGH-IN



SHOWER SPRAY PATTERN

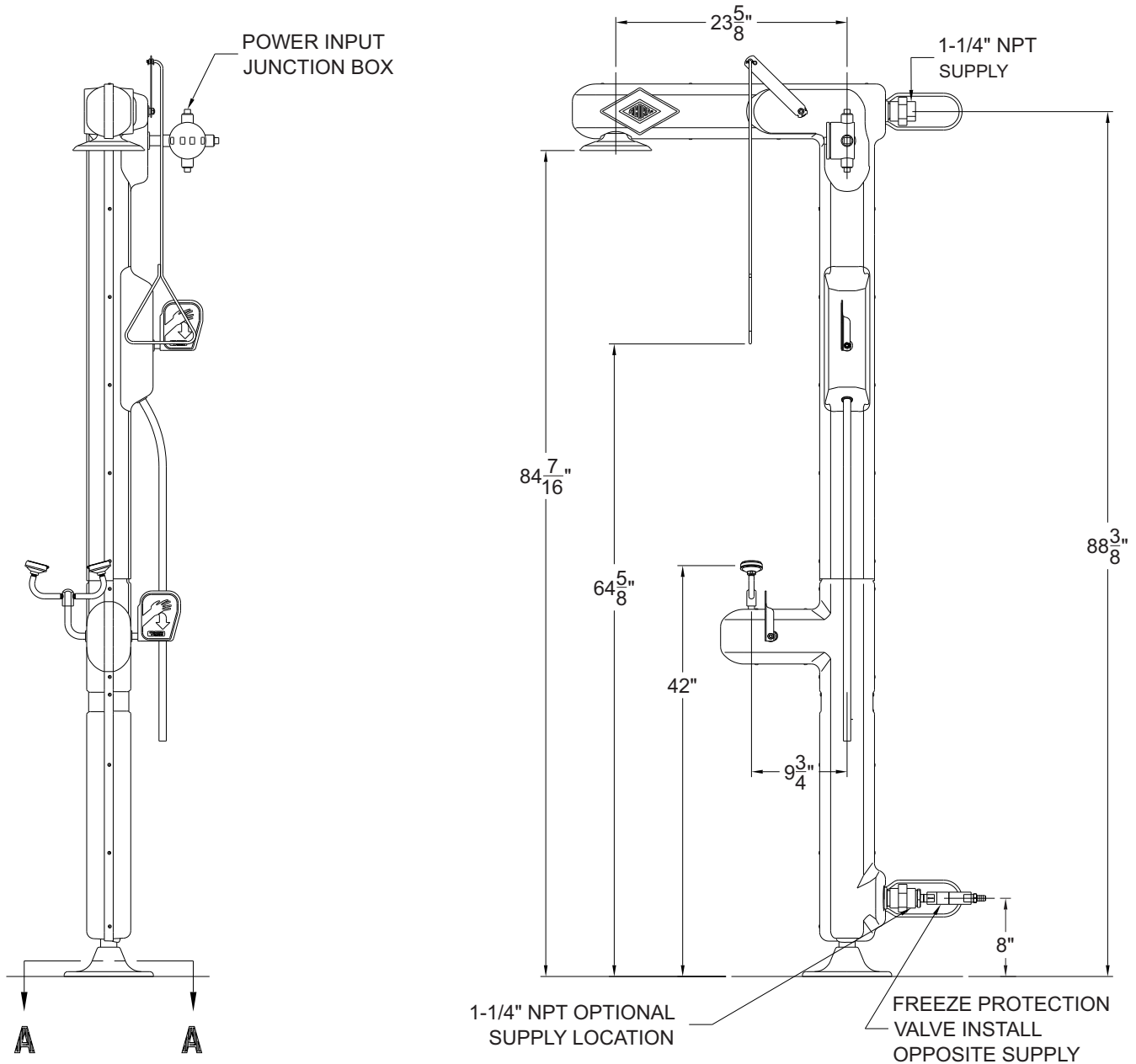


GENERAL NOTES:

- 1. ALL DIMENSIONS ARE IN INCHES [MM].
- *2. AREA NEEDS TO BE KEPT CLEAR TO COMPLY WITH ANSI Z358.1

S1360-HT:

**Heat Traced Combination Station,
Eye/Face Wash, Plastic Showerhead & Drench Hose**



GENERAL NOTES:

1. ALL DIMENSIONS ARE IN INCHES [MM].
- *2. AREA NEEDS TO BE KEPT CLEAR TO COMPLY WITH ANSI Z358.1

INSTALLATION INSTRUCTIONS:

Supplies required: (not provided by Acorn)

1. Wall fasteners for signage mounting.
2. Floor fastener anchors, washers and bolts.
3. Pipe sealant or Teflon tape for sealing water connections.

IMPORTANT: FLUSH WATER SUPPLY LINES PRIOR TO CONNECTION TO SAFETY EQUIPMENT.

NOTES:

- Heat Trace cable used on this model is intended to prevent freezing and will not provide tempered (heated) water. It is recommended to supply this combination shower assembly with a tempering system in compliance with ANSI Z358.1.
- Bottom of shower head must be between 82"-96" from finished floor in order to meet ANSI Z358.1
- Use hand tools and wrenches in a manner which will prevent marring finished surfaces. Strap wrenches or tools with plastic jaw linings are highly recommended.
- Refer to Rough-in for location of supply and drain lines.
- Fragments of Teflon tape or pipe sealant residue can interfere with the proper operation of this unit. Ensure pipe sealant methods do not cause contamination in the system.
- Prior to beginning assembly, TURN OFF water supply to 1 1/4" potable water supply line.

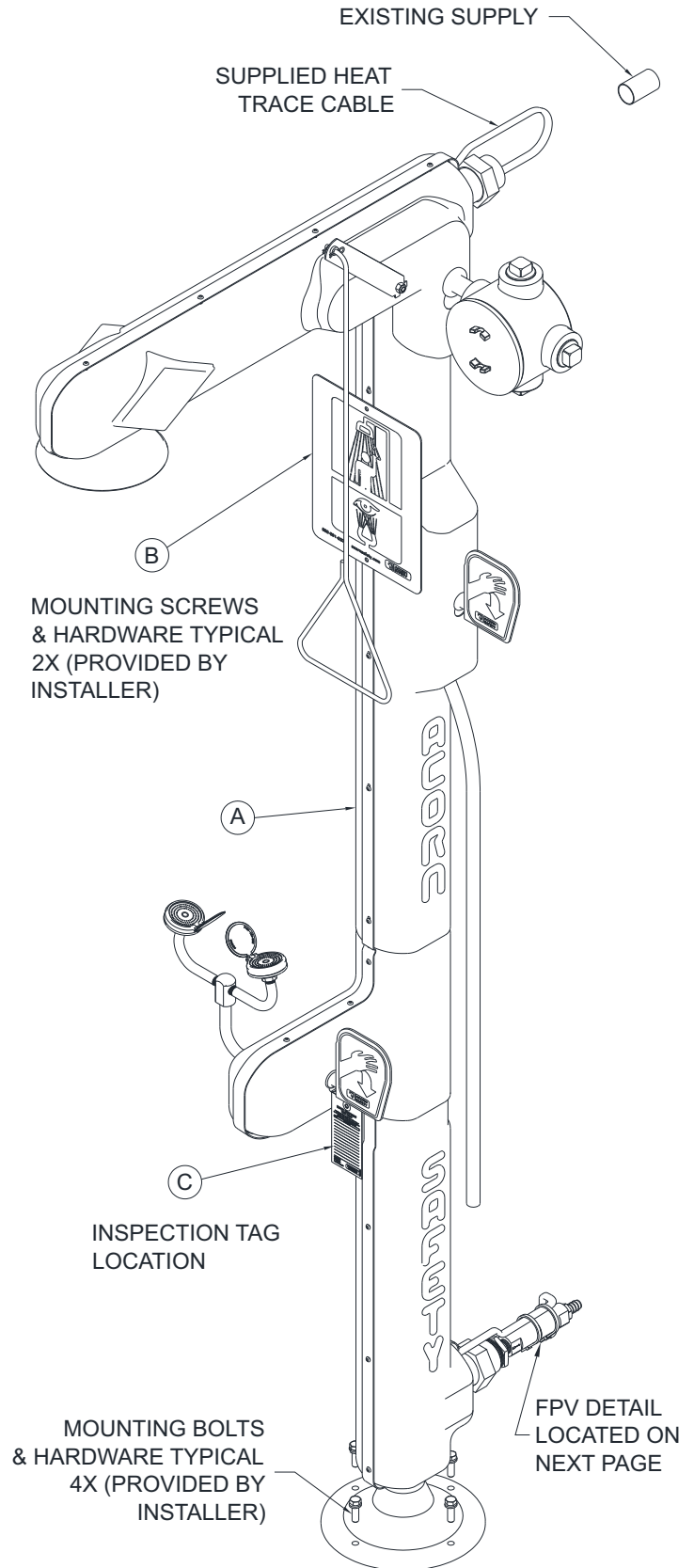
STEP ONE: PEDESTAL

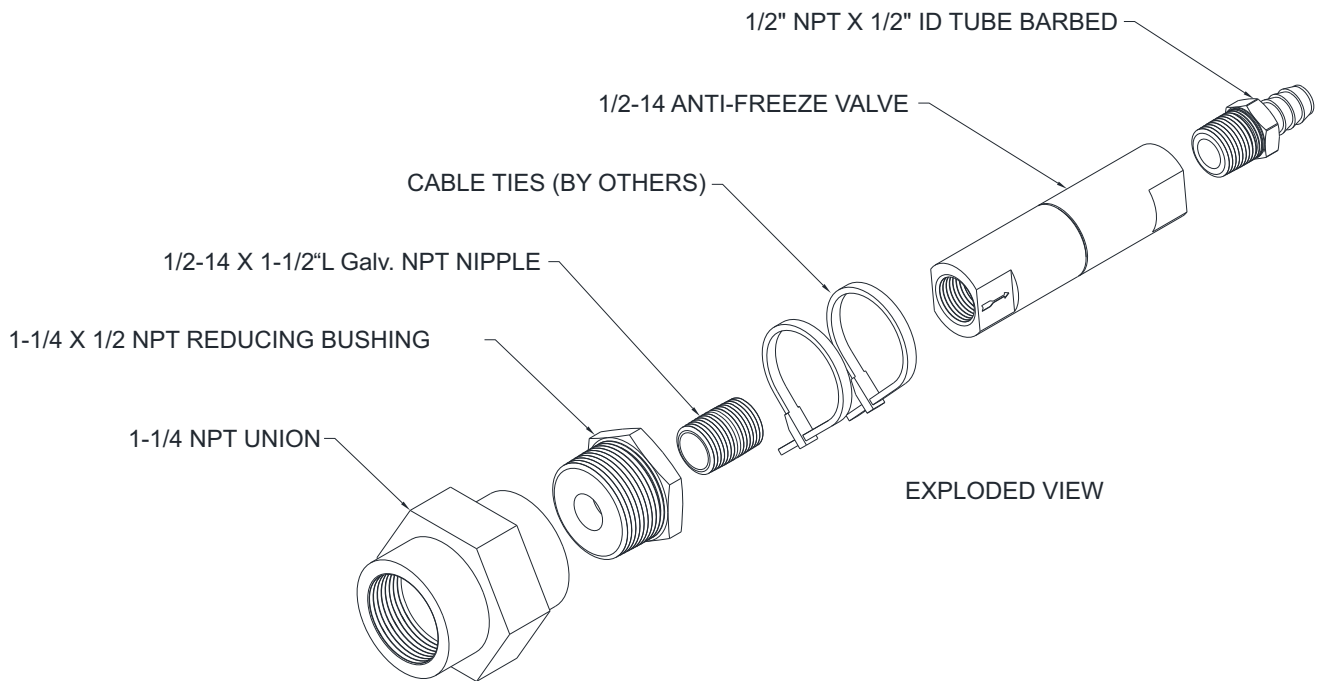
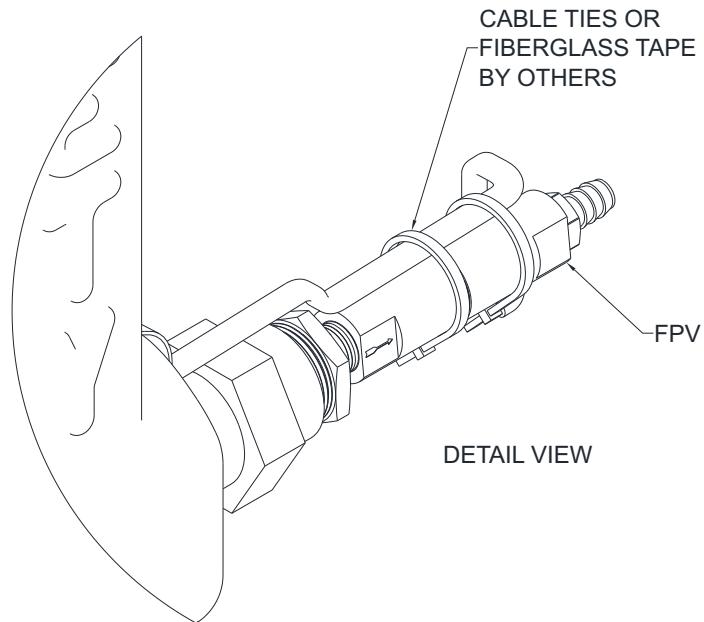
1. Position center of pedestal assembly "A" a minimum of 1'-8" from all walls. While holding the assembly in position, mark floor flange mounting hole positions.
2. Remove assembly and install appropriate floor anchors to receive mounting bolts (supplied by others).
3. Re-position assembly and install mounting bolts and washers.

STEP TWO: SUPPLY AND SANITARY DRAIN CONNECTION

Note: Refer to Rough-In for supply line locations.

1. Install necessary pipe fittings (supplied by others) to make connection to 1 1/4" NPT supply union w/ potable water supply line. Either top or bottom supply may be used.
2. Make sure proper drainage is supplied nearby.
3. Install supply union not used in FPV (Freeze Protection Valve).
4. Tie the Heat Trace cable to the FPV with Cable ties or Fiberglass tape. (See Detail)
5. Insulate FPV with foam insulation. (Supplied by Others)
6. Tubing can be connected to the outlet of the Freeze Protection Valve if desired. Make sure the tubing is not kinked & draining water will not freeze.





STEP THREE: ELECTRICAL CONNECTION

Note: A GFCI protected circuit providing single phase 120 VAC, 60 Hz electrical service is required. Fixture is rated 5A @ 0° Fahrenheit ambient temperature. Refer to the Wiring Diagram for electrical box connections.

1. Make power connections to the ground, neutral & hot within the electrical box.

STEP FOUR: TESTING

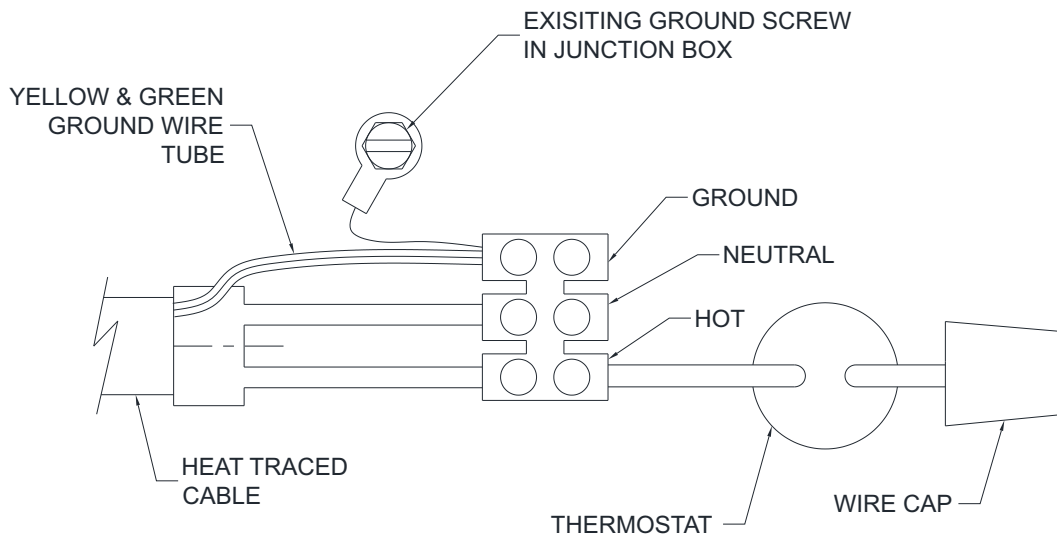
1. Open water supply.
2. Test for leaks, proper operations and flow.

STEP FIVE: SIGNAGE AND INSPECTION

1. Install sign "B" with clear visibility as shown, with appropriate hardware (supplied by others).
2. Attach inspection tag, "C", supplied with plastic zip tie to the activation handle.

NOTE:

IF SUPPLY WATER TEMPERATURE IS BELOW 45° F (7° C), THE FREEZE PROTECTION VALVE MAY NOT REMAIN OPEN AND BLEED WATER UNTIL THE VALVE TEMPERATURE INCREASES. THIS CAN BE REMEDIED BY SUPPLYING TEMPERED WATER TO THIS UNIT. MAKE SURE THAT HEAT TRACE CABLE HAS HAD TIME TO WARM UP BEFORE TESTING WITH COLD (<50° F) SUPPLY WATER.



SCHEMATIC

SHOWER OPERATION INSTRUCTIONS:

Employees who work with hazardous materials should become familiar with the location and operation of the nearest emergency plumbing fixture. In addition, proper clothing and equipment should be worn whenever working with hazardous materials. Emergency plumbing fixture stations are simple to use and require hands free operation once the station is activated. Regular instruction regarding proper care and use will increase confidence that the units are accessible and function properly.

The route and area surrounding the Drench Shower should be clear and unobstructed; the sooner a person has rinsed off any contamination, the less likelihood of injury. Drench Shower stations should be located in close proximity to the hazard and take no more than 10 seconds to reach. In the possibility of a strong acid or strong caustic contamination the Drench Shower should be immediately adjacent to the hazard. The victim may require assistance to the Drench Shower station and help removing shoes and clothing.

1. To start the Drench Shower pull down on the pull handle to "ON" position. The Drench Shower will start.
2. Stand directly under the spray pattern. Clothing should be removed immediately prior to or during the rinsing to prevent contamination from remaining against the body causing unnecessary injury and pain. Accept assistance removing shoes and clothing.
3. Completely rinse with arms and legs separated for approximately 15 minutes or until medical personnel arrive. Be prepared to inform medics on the type of substance that is causing the injury or contamination.
4. When finished push up on the pull handle to "OFF" position. Drenching fluid should stop.

SHOWER MAINTENANCE GUIDE:

Maintain and inspect in accordance with ANSI Z358.1-2009

1. Check for obvious signs of wear, broken or defective equipment. Re-paint if necessary. Replace missing or defective equipment such as broken push paddles, missing signs and inspection tags.
2. Operate Drench Shower using the pull handle to place ball valve in the fully "ON" position checking for smooth operation of valve push paddle mechanism. If the ball valve does not operate smoothly check the actuating assembly for binding or missing parts.
3. Return push handle to vertical or fully "OFF" position.

EYE/FACE WASH OPERATION

INSTRUCTIONS:

Employees who work with hazardous materials should become familiar with the location and operation of the nearest emergency plumbing fixture. Emergency plumbing fixtures stations are simple to use and require hands free operation once the station is activated. Regular instruction regarding proper care and use will increase confidence that the units are accessible and function properly.

The route and area surrounding the Eye Wash should be clear and unobstructed; the sooner eyes are flushed, the less likelihood of damage. Eye Wash stations should be located in close proximity to the hazard and take no more than 10 seconds to reach. In the case of severe eye contamination the victim may require assistance to the Eye Wash station and help flushing their eyes.

Safety plumbing fixture equipment should be operated weekly for a period long enough to verify operation, clear the supply line of any sediment build-up and minimize microbial contamination due to sitting water.

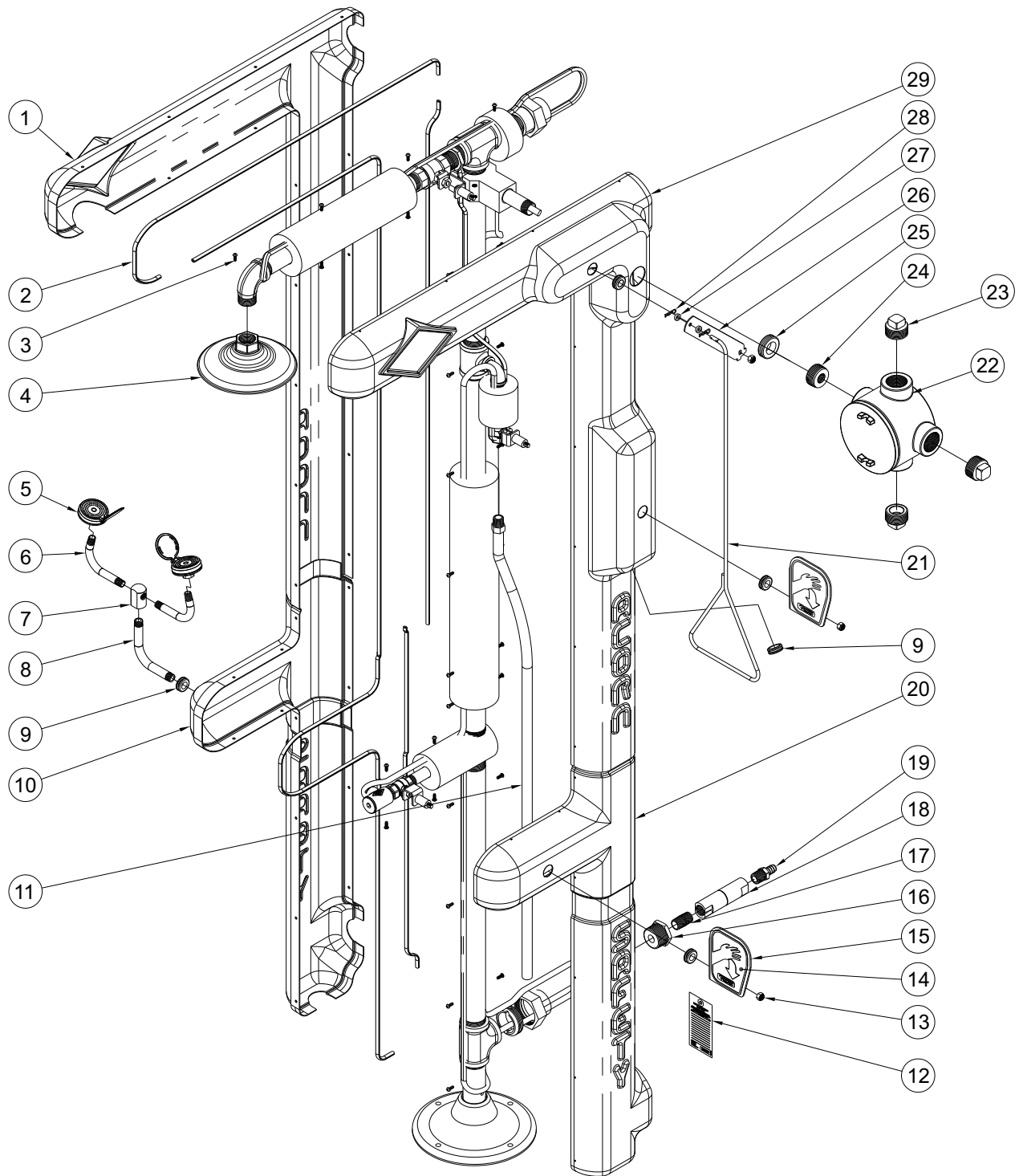
1. To start the Eye Wash, swing spray nozzle assembly over the basin and push the paddle forward to the horizontal or fully "ON" position. Flushing should start, popping the spray nozzle caps open.
2. Lower both eyes into flow. Both eyes should be flushed to prevent contamination from one eye from being delivered to unaffected eye. Personnel who wear contact lenses should remove them immediately prior to or during the flush to prevent the contamination from remaining against the cornea possibly causing unnecessary damage or pain.
3. Using thumb and forefingers, fully open eyelids and flush eyes thoroughly for approximately 15 minutes or until medical personnel arrive. Be prepared to let the doctor know what type of contamination has entered the eye.
4. When finished return the push paddle to the vertical or fully "OFF" position and return spray nozzle assembly to standby position. Flushing fluid should stop. Once flushing fluid has stopped flowing, return spray nozzle lids to the closed position to protect from airborne contaminants.
3. Operate Eye Wash nozzles using the push paddle to place ball valve in the fully "ON" position checking for smooth operation of valve push paddle mechanism at the same time ensuring that the Eye Wash spray nozzle caps pop off immediately when actuated. If the ball valve does not operate smoothly check the actuating assembly for binding or missing parts. If the Eye Wash spray nozzle caps do not pop off immediately when actuated check for correct supply inlet pressure.
4. While in operation, inspect spray nozzles for clogs or debris correct or replace as required.
5. Return push paddle to vertical or fully "OFF" position and swing back to stand by position. To prevent Eye Wash spray nozzles from becoming contaminated, always close nozzle lids after each use.

EYE/FACE WASH MAINTENANCE

GUIDE:

Maintain and inspect in accordance with ANSI Z358.1-2009

1. Check for obvious signs of wear, broken or defective equipment. Re-paint if necessary. Replace missing or defective equipment such as broken push paddles, missing signs and inspection tags.
2. Remove strainer and washout any debris collected –replace as required.



ITEM #	PART NUMBER	DESCRIPTION
1	7106-191-000	HOUSING, UPPER, LEFT HAND, HEAT TRACED
2	7106-311-000	TRIM, RUBBER U SHAPE
3	0124-054-000	SCREW, #8-18X1/2", BUTTON HD, SS, THRD FORMING
4	7102-300-001	ASSEMBLY, PLASTIC SHOWER HEAD
5	7101-104-001	FACEWASH ASSY
6	7101-403-000	STAINLESS STEEL YOKE SUPPLY TUBE
7	7101-401-199	STAINLESS STL YOKE FTG, INTERNAL THRDS
8	7106-349-000	3/8" BENT SPLY TUBE, E/F, S/S, HT TRACE
9	7106-304-000	GROMMET 1.13 OD .81 ID .38 THK HT TRACE
10	7106-192-000	HOUSING, LOWER, LEFT HAND, HEAT TRACED
11	7106-412-000	HOSE EPDM RUBBER MULTI-PURPOSE HT TRACE
12	7100-401-000	EYE/FACE WASH SERVICE TAG
13	0304-008-000	3/8 -16 ZINC PLATED NUT
14	7100-400-000	PUSH HANDLE LABEL
15	7106-407-199	ACTIVATOR PUSH HANDLE, HT TRACE
16	7100-325-000	S/S 1 1/4"x1/2 NPT REDUCING BUSHING
17	1974-001-000	1/2"-14x1.5"L GALV NPT NIPPLE
18	7100-312-000	1/2 ANTI-FREEZE VALVE
19	1895-550-000	1/2" NPTx1/2"ID TUBE BARBED
20	7106-193-000	HOUSING, LOWER, RIGHT HAND, HEAT TRACED
21	7102-350-000	PULL HANDLE, DRENCH SHOWER, 29"
22	7106-207-000	4 HUB 1-1/4 w/ 3/4 SEAL FITTING w/NIPPLE
23	7100-128-000	1-1/4" NPT GALVANIZED PLUG
24	7106-200-000	1-1/4 X 3/4 REDUCING BUSHING
25	7106-302-000	GROMMET 1.75 OD 1.00 ID .50 THK HT TRACE
26	7102-352-150	HANDLE BRACKET, EXTENSION, PULL ROD
27	7100-219-000	WASHER, NYLON, OD.5 X ID.25 X THICK .15
28	0341-103-000	COTTER PIN, HAIRPIN, 1 1/8 LG. .059 DIA. WIRE, STN. STL.
29	7106-191-000	HOUSING, UPPER, RIGHT HAND, HEAT TRACED